

Songs for Mother Nature

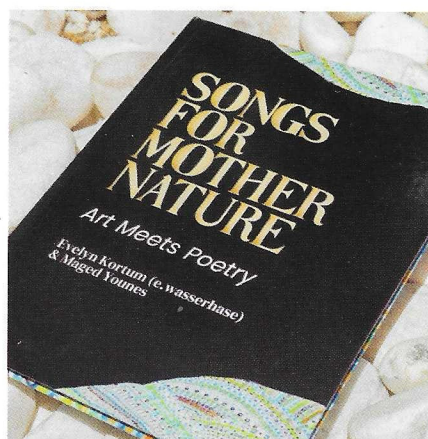
Art meets Poetry



Armadura Amazona

The form of the palm bark resembles body shields, but also has a truly feminine appearance. Armadura Amazona protects the feminine.

ARMADURA
AMAZONA



Inspiration can come from various sources and in various forms. For Evelyn, inspiration comes from nature and is expressed through her artwork, for her husband Maged, it is different. His expression is in the form of poetry, remarkably, the inspiration for his poems is the artwork of his wife. The sparking off each other's creativity has led the symbiotic couple to publish a book. A book where two creatives fuse their inspiration together forming a beautiful and visually enticing combination of art and poetry.

The idea for this book emerged during Evelyn's first exhibition in Estepona, Spain. In addition to her art work, they posted four

poems corresponding to four pieces of art together with a translation to Spanish. Visitors of the exhibition found the combination to be inspiring. They therefore decided to publish this book, which shows the soul connection between the two of them, and demonstrates the synergy between art and poetry. Through this project, they hope to contribute to a better understanding of the responsibility of us humans for our environment. They also wish to stimulate the understanding that there is much beyond what we can perceive with our five senses.

Instagram: @e.wasserhase

Facebook: @e.wasserhase - art

You Tube: @e.wasserhase - sustainable art

Website: ewasserhase.com

Infinity

No beginning and no end:
Past and future side by side
With the present in a blend.
Time is not a linear stride.

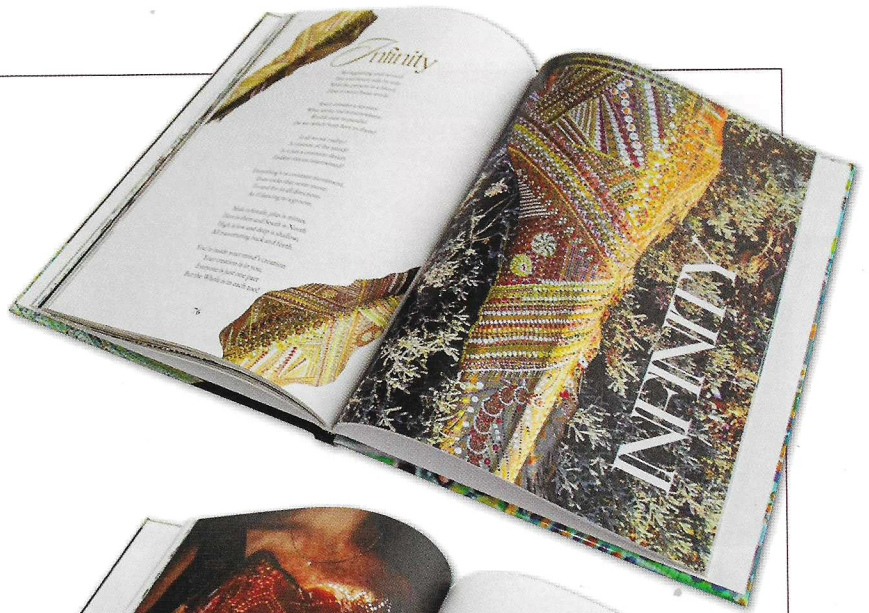
Space remains a mystery
What seems real is everywhere:
Worlds exist in parallel
Do we switch from here to there?

Is all we see reality?
A creation of the mind?
Is it just a common dream
Endless visions intertwined?

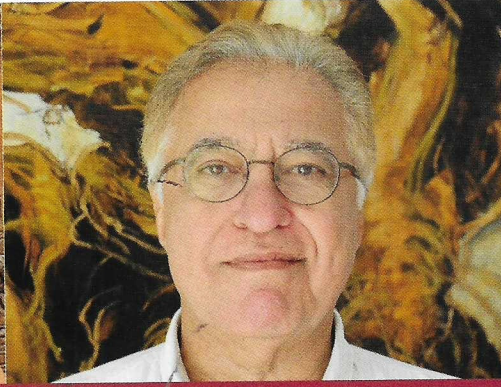
Everything's in constant movement,
Even rocks that never move:
To and fro in all directions
As if dancing to a groove.

Male is female, plus is minus,
Here is there and South is North
High is low and deep is shallow,
All transmuting back and forth.

You're inside your mind's creation
Your creation is in you,
Everyone is just one part
But the Whole is in each too!



The Artist



The Poet



Introducing Lena

Evelyn Kortum (e.wasserhase) creates sustainable and unique art pieces by using mostly acrylic paint on reclaimed natural waste. These typically include raw pieces of palm bark, leaves, branches or eucalyptus bark, materials that are usually burnt by gardeners. Each piece is worked with love, passion and respect for its natural shape. The colours and painted shapes are chosen, not only to embellish the pieces, but to enhance their natural beauty. Her inspirations emanate from aboriginal and ethnic art and shapes while using different colour palettes from earthen to water and rainbow colours.

Maged has always loved to indulge in foreign cultures. As a schoolboy, though focused on natural sciences, he kept a deep interest in languages, philosophy, poetry, music and art. He never lost sight of these areas while he worked as a scientist, academic teacher and manager in the fields of Environmental Health at national, European and International levels. Spirituality in its purest and most independent sense has always been important to Maged. This interest fuels his poetry, from a deep conviction that we are all spiritual beings and that it is our responsibility as human beings to respect, love and protect our world.

There is a third dimension that complements the work of Evelyn and Maged: Music. Here is where daughter **Lena** comes into play. An artist and a poet herself, Lena writes lyrics and composes the music for her own inspirational songs. The relation between all three is one of encouragement, support, collaboration and critical review. Lena's songs were the inspiration for Maged to start writing poetry after many years, beginning with the lyrics of a song for which Lena wrote the music. Evelyn used Lena's soundtracks to show her artwork on social media. Lena was a great asset in supporting technical aspects of Evelyn's work such as the website design, and the social media set-up.
www.lenayounes.com